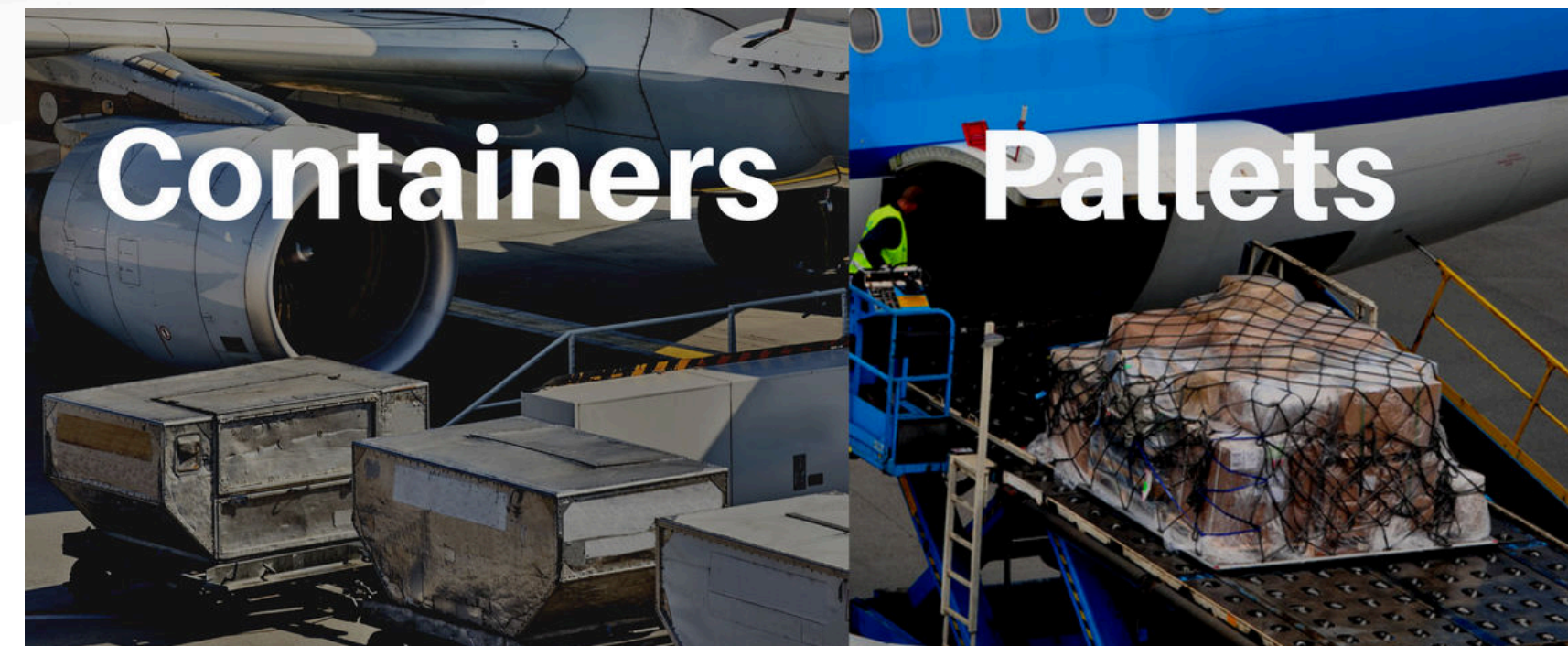


Unit Load Devices (ULD) Air Container Specs.

Unit Load Devices are specially designed cargo pallets and containers that are used to load freight, luggage and mail onto aircraft. These devices allow large quantities of cargo to be bundled and strapped together securely onto 1 mobile unit, so they can safely and securely transported.

The International Air Transport Association (IATA) is responsible for publishing regulations around the use of Unit Load Devices. The following images and specifications illustrates the average external dimensions and weight limitations of popular ULDs. These images are to be used as a guide only. Please note that the exact weight limitations and dimensions will vary by manufacturer.



LD-1



IATA ULD code: AKC contoured container

Prefixes: AVC, AVD, AVK, AVJ, and forkable AVY

Rate class: Type 8

Description: Half-width lower hold container with one angled side. Door is either canvas or solid.

Suitable for: 747, 767, 777, 787, MD-11 lower hold

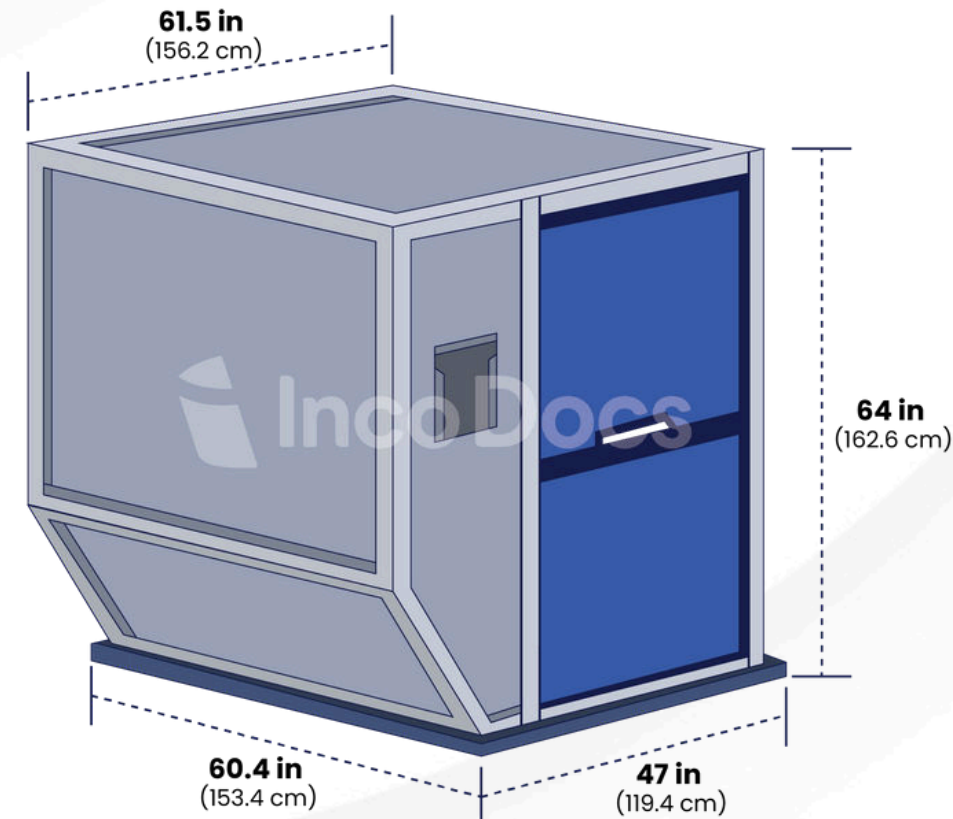
Door opening: 147 x 155 cm (58 x 61 in)

Maximum gross weight: 1,588 kg (3,501 lb)

Tare weight: 70 to 170 kg (155 to 375 lb)

AS1825 volume: 5.0 m³(175 ft³)

LD-2



IATA ULD code: DPE contoured container

Prefixes: APA, DPA, and forkable DPN

Rate class: Type 8D

Description: Half-width lower hold container with one angled side. Door is either canvas or solid.

Suitable for: 747, 767, 777, 787 lower hold

Door opening: 44 x 60-in (112 x 152-cm)

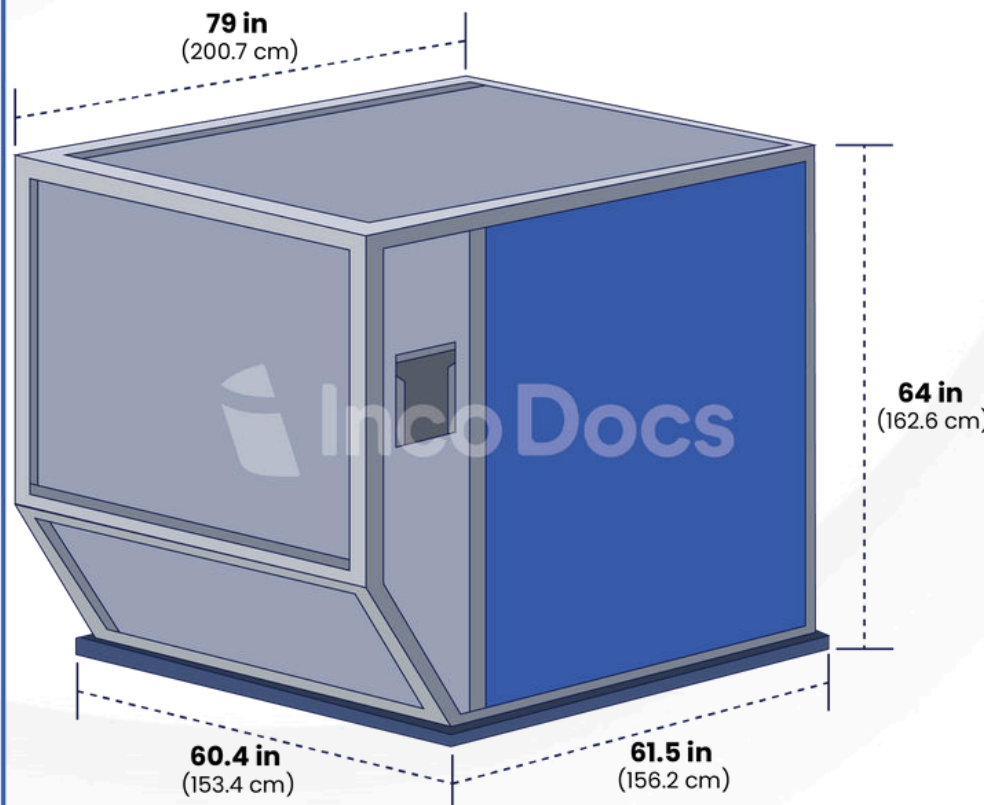
Maximum gross weight: 1,225 kg (2,700 lb)

Tare weight: 92 kg (203 lb)

AS1825 volume: 3.5 m³ (124 ft³)

Boeing volume: 3.5 m³ (124 ft³)

LD-3



IATA ULD code: AKE contoured container

Prefixes: AKE, AVA, AVB, AVC, AVK, DVA, DVE, DVP, XKS, XKG, and forkable AKN, AVN, DKN, DVN, and XKN

Rate class: Type 8

Description: Half-width lower deck container with one angled side. Door is either canvas or solid.

Loadability: A300, A310, A330, A340, 747, 767, 777, DC-10, MD-11, and L-1011

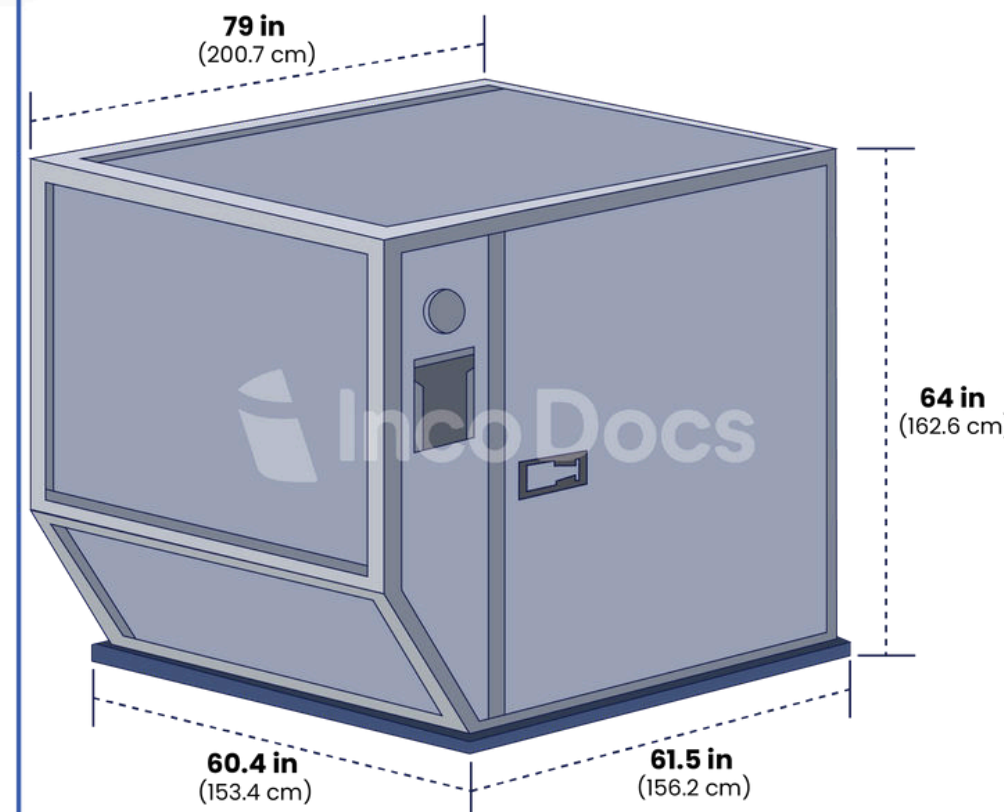
Door opening: 58 x 61 in (147 x 155 cm)

Maximum gross weight: 3,500 lb (1,588 kg)

Tare weight: 181 lb (82 kg)

AS1825 volume: 159 ft³ (4.5 m³)

LD-3 Reefer



IATA ULD code: RKN contoured cool container

Prefixes: RVN

Rate class: Type 8

Description: Half-width lower hold insulated container with one angled end. Door is solid. Most examples are forkable.

Suitable for: 747, 767, 777, 787, DC-10, MD-11 lower hold

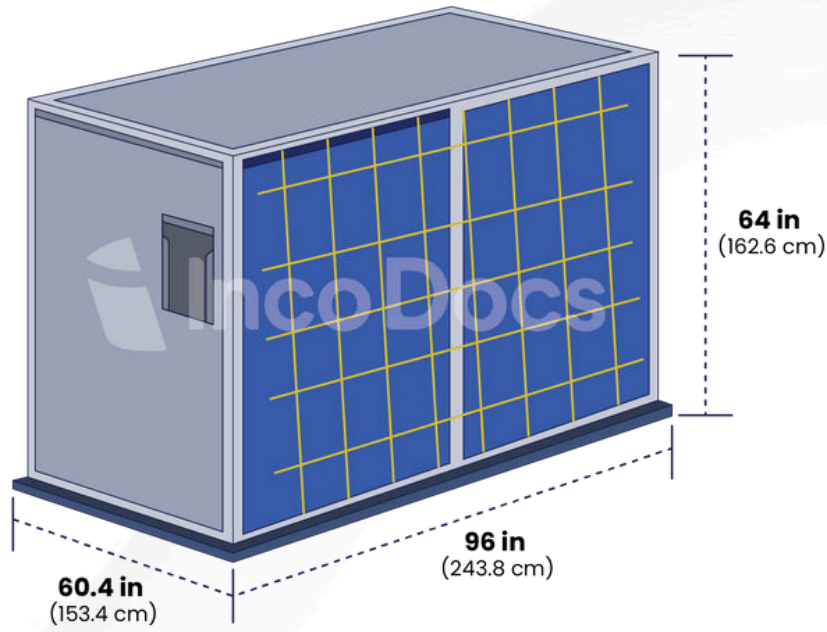
Door opening: 54 x 55-in

Maximum gross weight: 1,588 kg (3,500 lb)

Tare weight: 210 kg (463 lb)

AS1825 volume: 4.5 m³ (159 ft³) plus internal volume (as is)

LD-4



IATA ULD code: ALP rectangular container

Prefixes: ALD, AWD, AWZ, DLP, and forkable ALB, ALC, AWB, and AWC

Rate class: Type 8

Description: Full-width lower hold container. Door is canvas with built-in door straps.

Suitable for: 767, 777, 787 lower hold

Door opening: 92 x 61-in (234 x 155-cm)

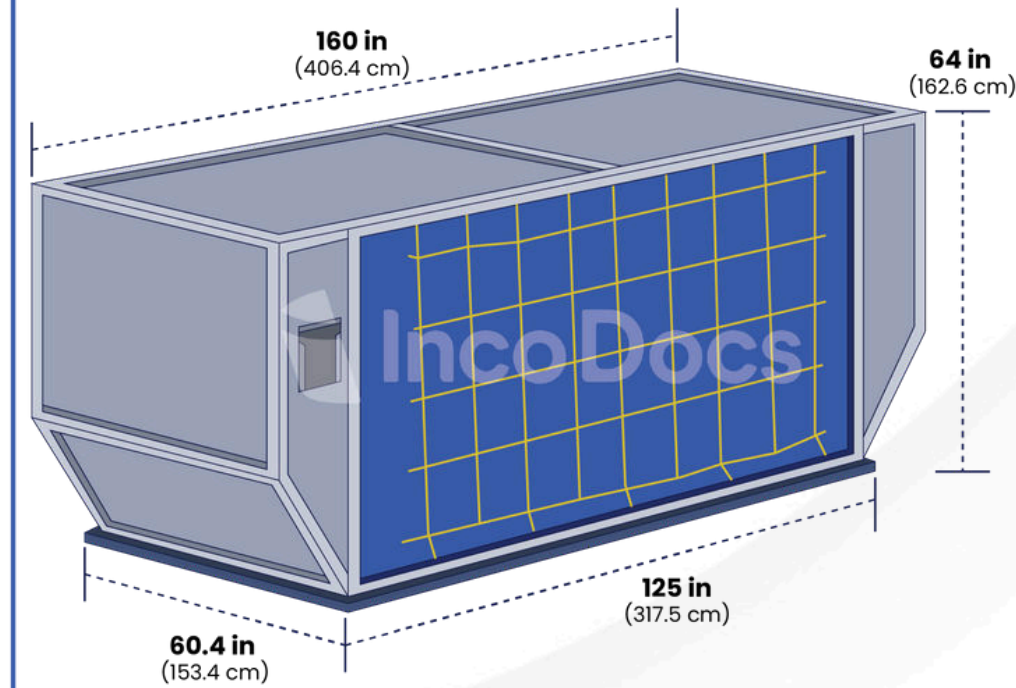
Maximum gross weight: 2,449 kg (5,399 lb)

Tare weight: 120 kg (264 lb)

AS1825 volume: 5.7 m³ (200 ft³)

Boeing volume: 5.5 m³ (195 ft³)

LD-6



IATA ULD code: ALF contoured container

Prefixes: AWA, AWF, and forkable AWC

Rate class: Type 6W

Description: Full-width lower hold container with angled ends. Door is canvas with built-in door straps.

Suitable for: 747, 777, 787, DC-10, MD-11 lower hold

Door opening: 120 x 60-in (305 x 152-cm)

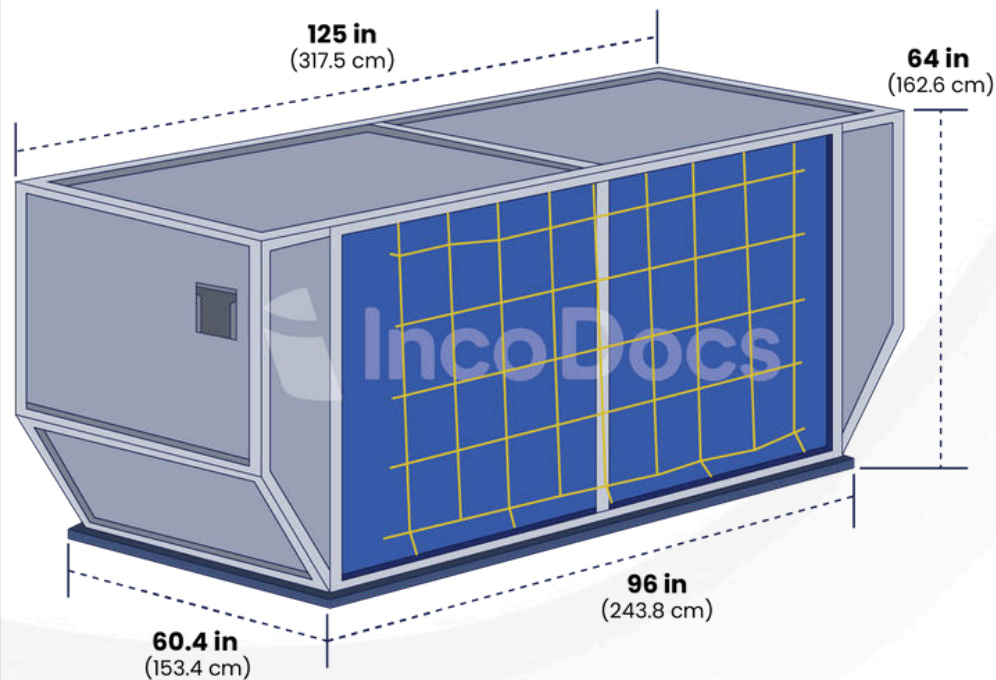
Maximum gross weight: 3,175 kg (7,000 lb)

Tare weight: 230 kg (507 lb)

AS1825 volume: 9.1 m³ (322 ft³)

Boeing volume: 8.9 m³ (316 ft³)

LD-8



IATA ULD code: DQF

Prefixes: ALE, ALN, DLE, DLF, DQP, and MQP

Rate class: Type 6A

Description: Full-width lower hold container angled at both ends. Door is canvas with built-in door straps.

Suitable for: 767, 787 lower hold

Door opening: 92 x 62-in (234 x 157-cm)

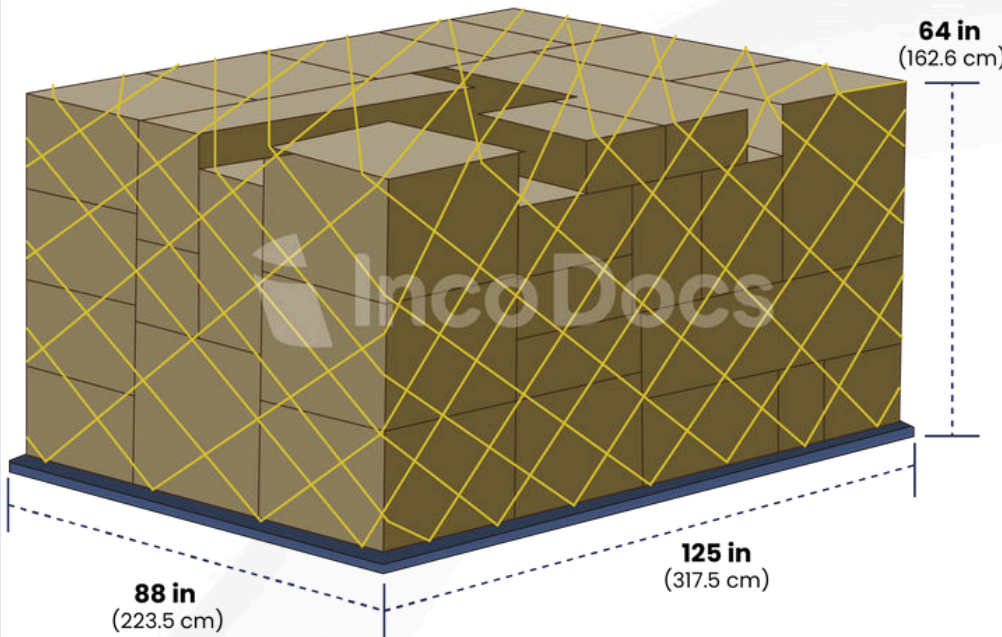
Maximum gross weight: 2,450 kg (5,401 lb)

Tare weight: 127 kg (280 lb)

AS1825 volume: 7.1 m³ (252 ft³)

Boeing volume: 6.9 m³ (245 ft³)

LD-7



IATA ULD code: PIP flat pallet with net

Prefixes: PAA, PAG, PAJ, PAP, PAX, PIA, PIC, PID, and PIG

Rate class: Type 5

Description: Universal general-purpose flat pallet for lower holds and main decks.

Suitable for:

Widebody: All aircraft lower holds and main decks
Standard-body: 707F, 727F, 737F, 757F, DC8F, DC9F main decks

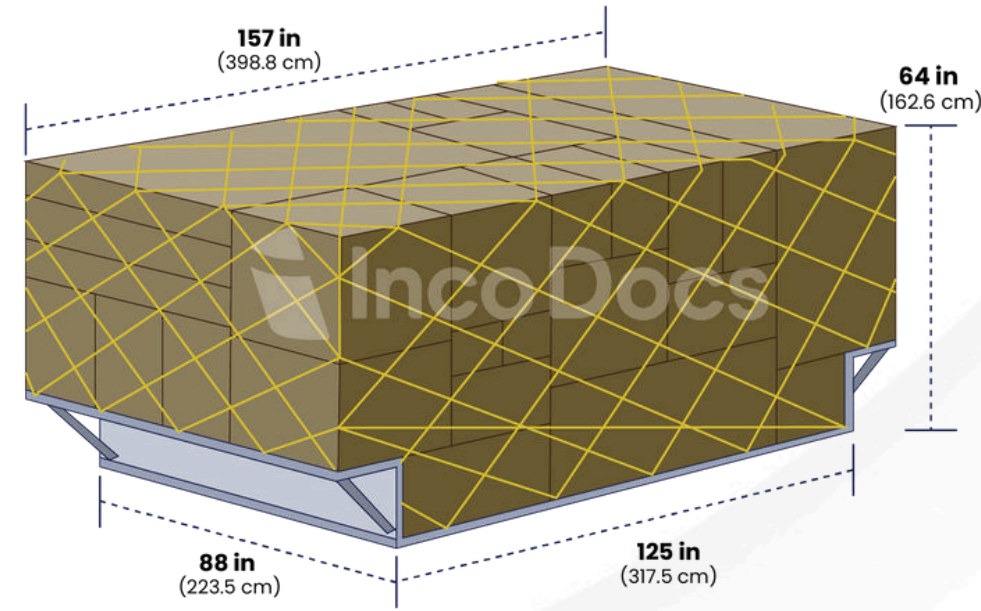
Maximum gross weight: 4,626 kg (10,198 lb)

Tare weight: 105 kg (231 lb)

AS1825 volume: 10.5 m³ (370 ft³)

Boeing volume: 10.7 m³ (379 ft³)

LD-7 with Folding Wings



IATA ULD code: PAD PIP pallet with folding wings and net

Prefixes: PAX and PIX

Rate class: Type 5

Description: PIP base with folding wings for overhang.

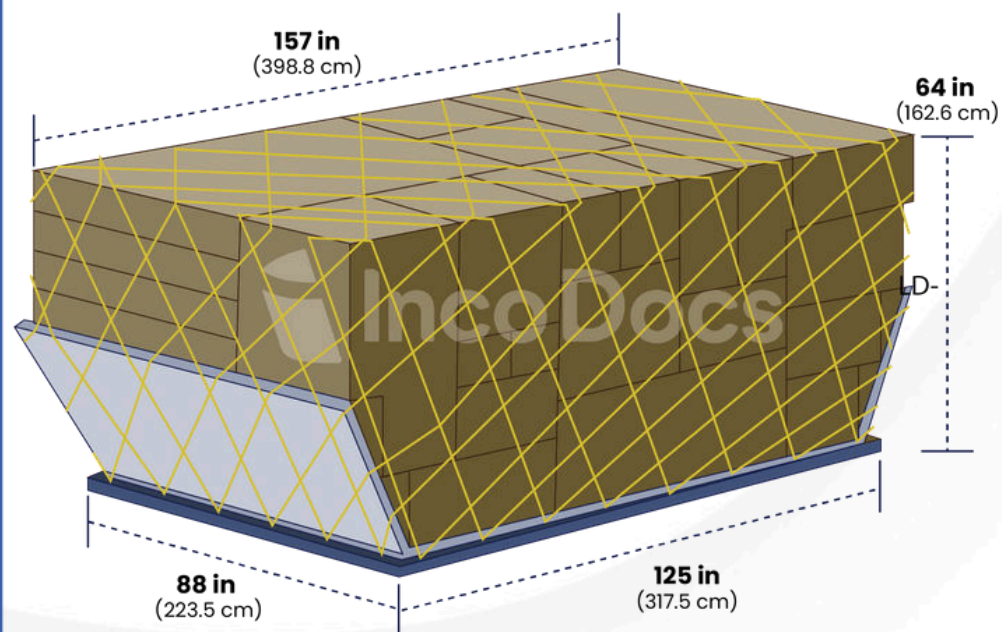
Suitable for: 747, 777, 787, DC-10, MD-11 lower holds

Maximum gross weight: 5,000 kg (11,023 lb)

Tare weight: 152 kg (335 lb)

AS1825 volume: 14.0 m³ (495 ft³)

LD-7 with Angled Wings



IATA ULD code: XAW PIP pallet with fixed-angle wings and net

Rate class: Type 5

Description: PIP base with fixed wings for overhang.

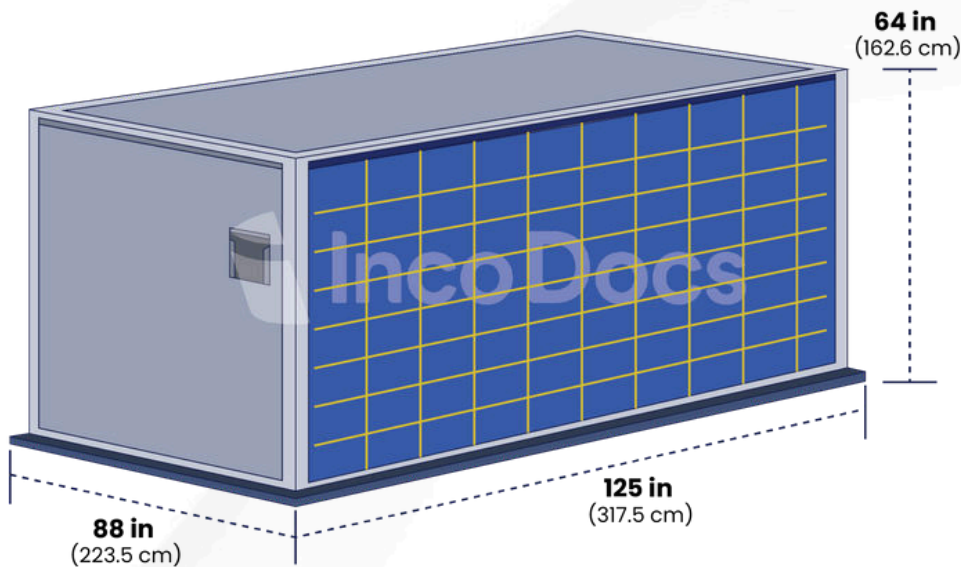
Suitable for: 747, 777, 787, DC-10, MD-11 lower holds

Maximum gross weight: 5,000 kg (11,023 lb)

Tare weight: 170 kg (375 lb)

AS1825 volume: 14.0 m³ (495 ft³)

LD-9



IATA ULD code: AAP enclosed pallet on PIP base

Rate class: Type 5

Description: General-purpose enclosed container fitted to PIP base. Door is canvas with built-in net door straps, or solid.

Suitable for: 747, 767, 777, 787, DC-10, MD-11 lower hold

Door opening: 118 x 58 in (300 x 147-cm)

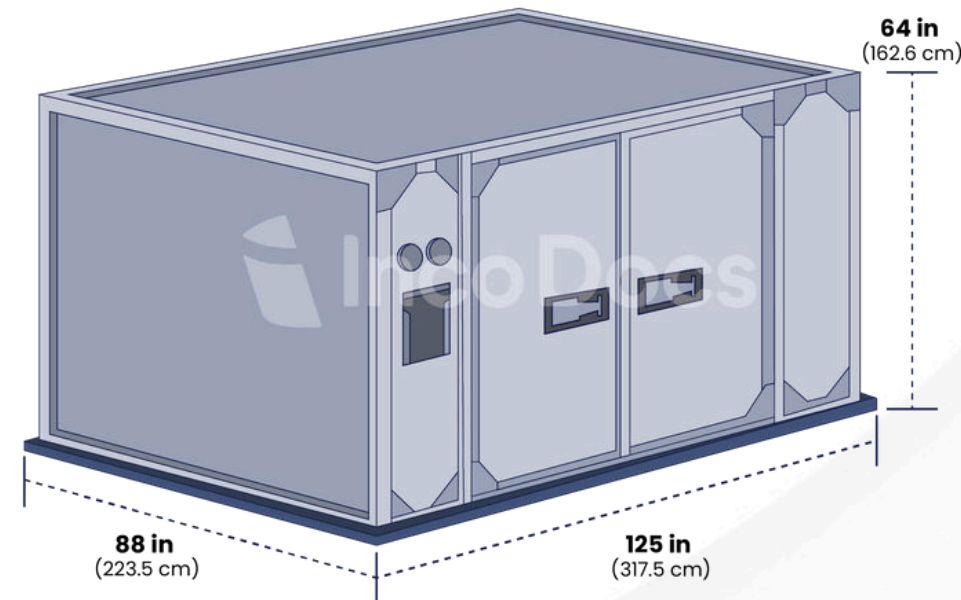
Maximum gross weight: Lower hold, 4,624 kg (10,194 lb); main deck, 6,000 kg (13,227 lb)

Tare weight: Canvas door, 215 kg (473 lb); solid door, 270 kg (595 lb)

AS1825 volume: 10.8 m³ (381 ft³)

Boeing volume: 10.8 m³ (381 ft³)

LD-9 Reefer



IATA ULD code: RAP cool container on PIP base

Rate class: Type 5

Description: Insulated container with solid door. Suitable for: 747, 767, 777, 787, DC-10, MD-11 lower hold

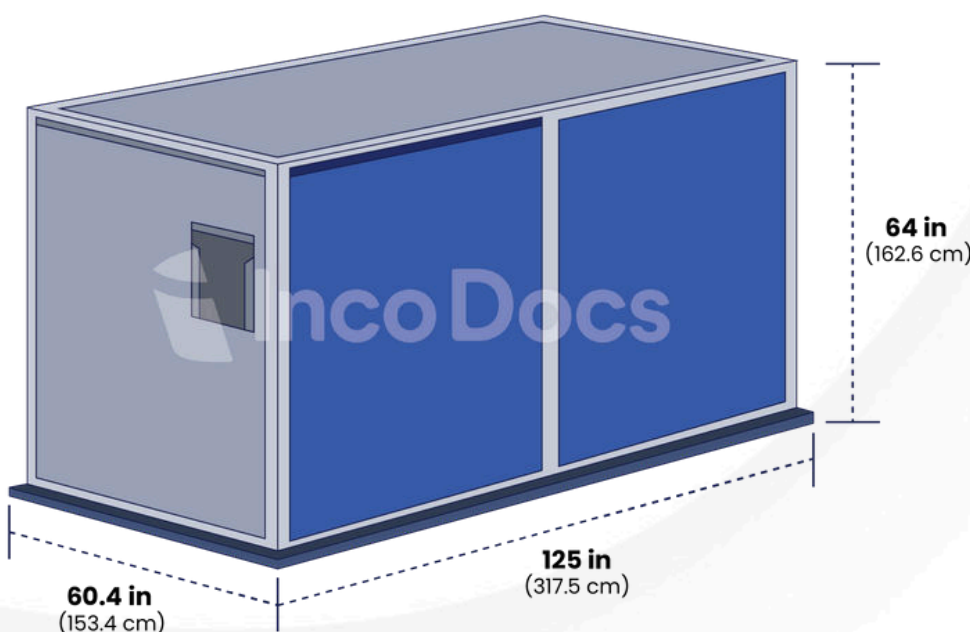
Door opening: 85 x 58-in (216 x 147-cm)

Maximum gross weight: Lower hold, 4,626 kg (10,198 lb); main deck, 6,000 kg (13,227 lb)

Tare weight: 400 kg (882 lb)

Internal volume: 9.6 m³ (339 ft³)

LD-11



IATA ULD code: ALP rectangular container

Prefixes: ALD, AW2, AWB, AWD, AWZ, DLP, DWB, and MWB. Refrigerated version: RWB, RWD, and RWZ.

Rate class: Type 6

Description: Full-width lower hold container. Door is canvas. Center post swings clear for loading.

Suitable for: 747, 777, 787, DC-10, MD-11 lower hold

Door opening: 120 x 61-in (305 x 155-cm)

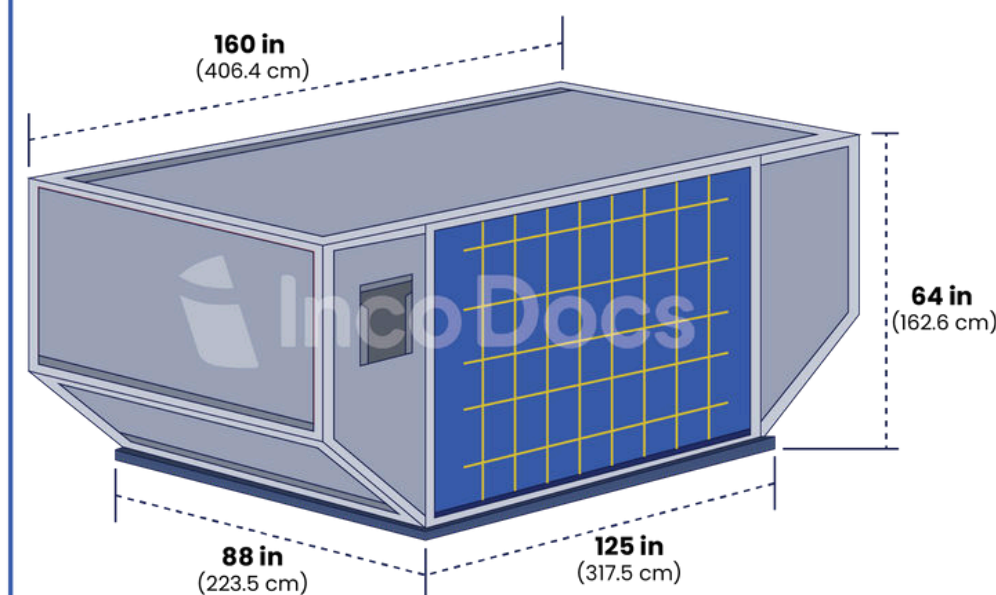
Maximum gross weight: 3,176 kg (7,002 lb)

Tare weight: 185 kg (408 lb)

AS1825 volume: 7.4 m³ (262 ft³)

Boeing volume: 7.2 m³ (256 ft³)

LD-26



IATA ULD code: AAF contoured container on PIP base

Rate class: Type 5

Description: Full-width lower hold container angled at both ends. Door is canvas with built-in net door straps.

Suitable for: 747, 777, 787, DC-10, MD-11 lower hold

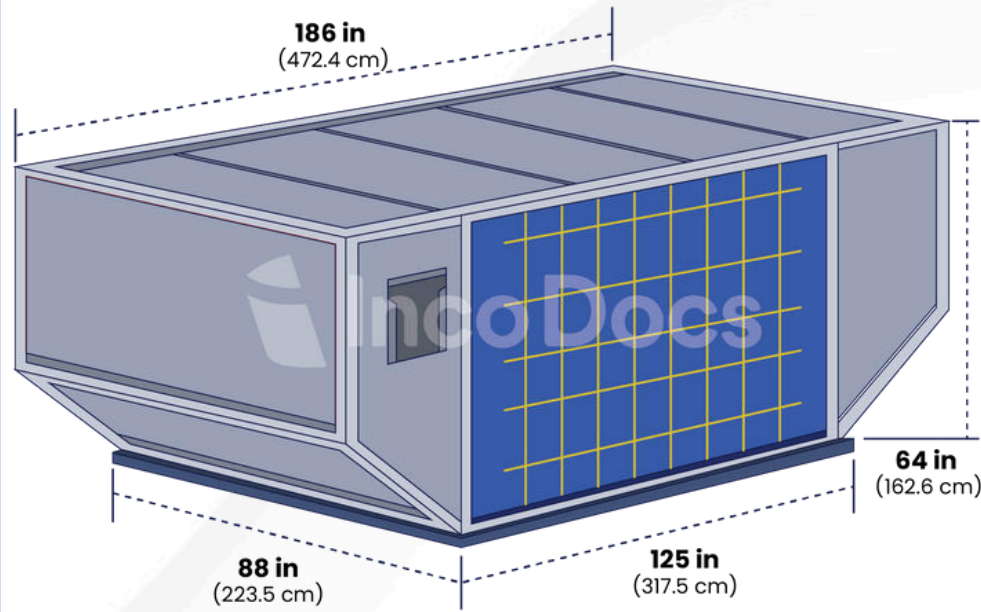
Door opening: 120 x 60-in (305 x 152-cm)

Maximum gross weight: 6,033 kg (13,300 lb)

Tare weight: 250 kg (551 lb)

AS1825 volume: 13.3 m³ (470 ft³)

LD-29



IATA ULD code: AAU contoured container on PIP base

Rate class: Type 5

Description: Full-width lower hold container angled at both ends. Door is canvas with built-in net door straps.

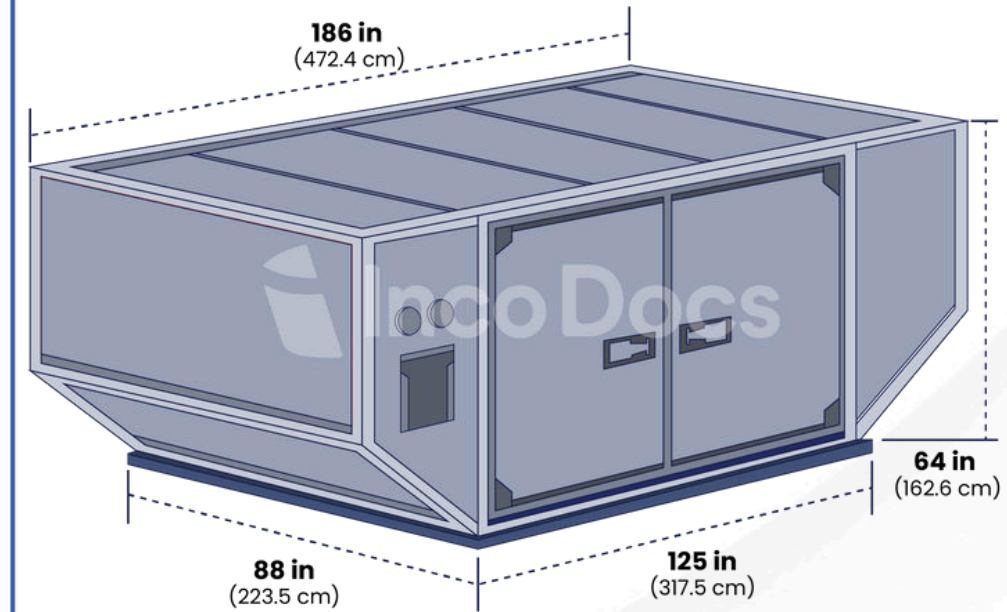
Suitable for: 747 lower hold Door opening: 118 x 60-in (300 x 152-cm)

Door opening: 6,033 kg (13,300 lb)

Tare weight: 265 kg (584 lb)

AS1825 volume: 14.4 m³ (510 ft³)

LD-29 Reefer



IATA ULD code: RAU contoured cool container on PIP base.

Rate class: Type 5

Description: Full-width lower hold container angled at both ends. Refrigerated version of AAU has solid door.

Suitable for: 747 lower hold

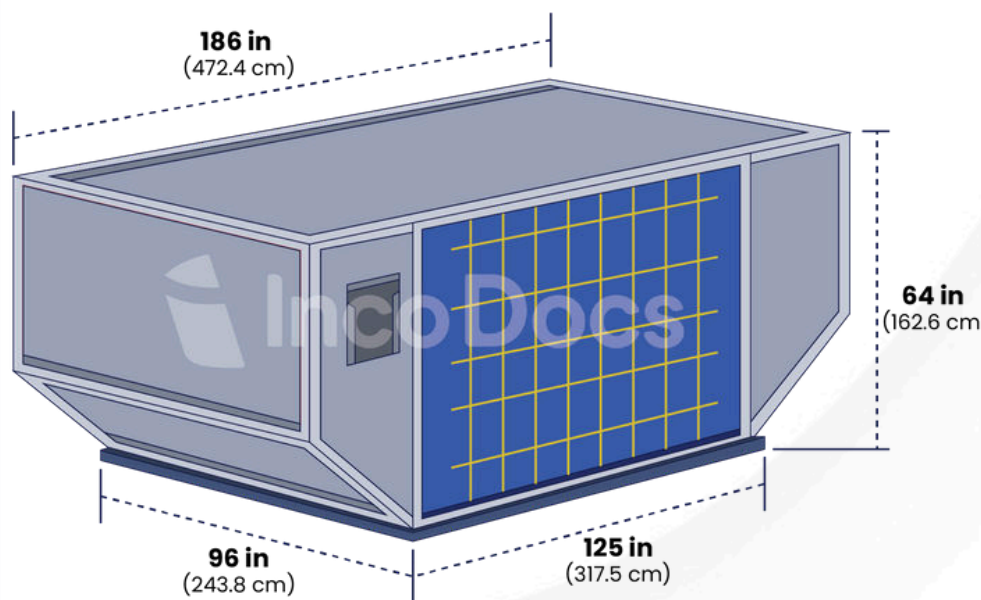
Door opening: 118 x 60-in (300 x 152-cm)

Maximum gross weight: 6,033 kg (13,300 lb)

Tare weight: 450 kg (992 lb)

Internal volume: 11.1 m³ (392 ft³)

LD-39



IATA ULD code: AMU contoured container on P6P base

Rate class: Type 2BG

Description: Full-width lower hold container angled at both ends. Door is canvas with built-in net door straps.

Suitable for: 747 lower hold

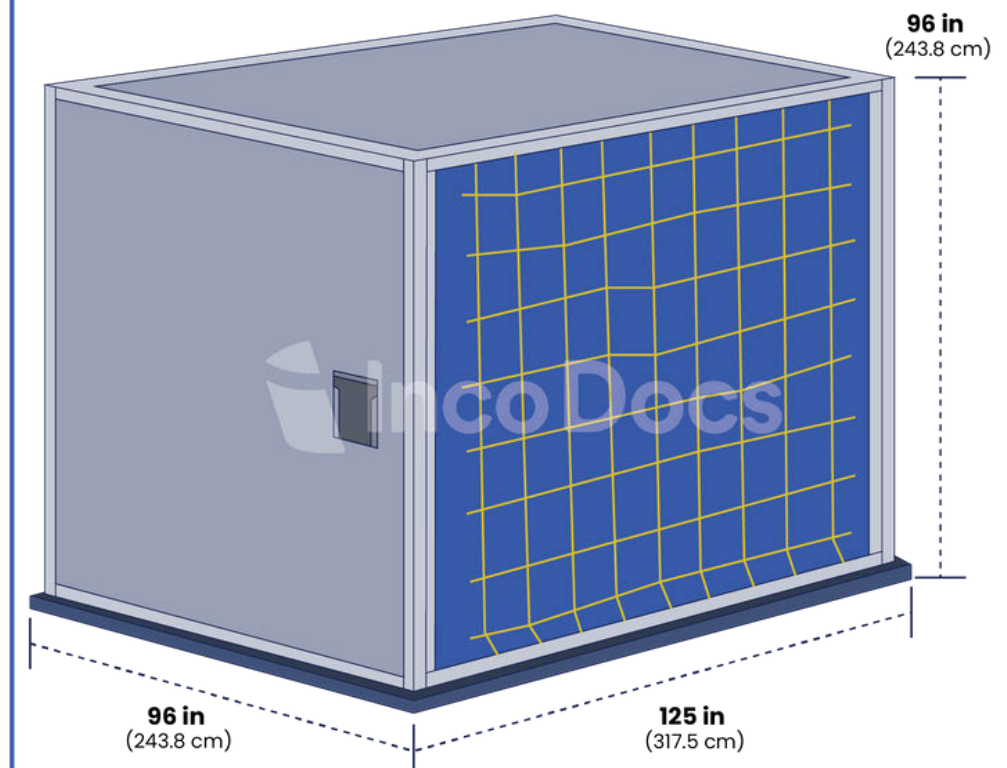
Door opening: 120 x 60-in (305 x 152-cm)

Maximum gross weight: 5,035 kg (11,100 lb)

Tare weight: 290 kg (639 lb)

AS1825 volume: 15.9 m³ (560 ft³)

M-1



IATA ULD code: AMA rectangular container P6P base

Prefixes: AMF, AMG, AMK, AMP, AQA, AQD, and AQ6

Rate class: Type 2

Description: Main-deck container. Door is canvas with built-in net door straps.

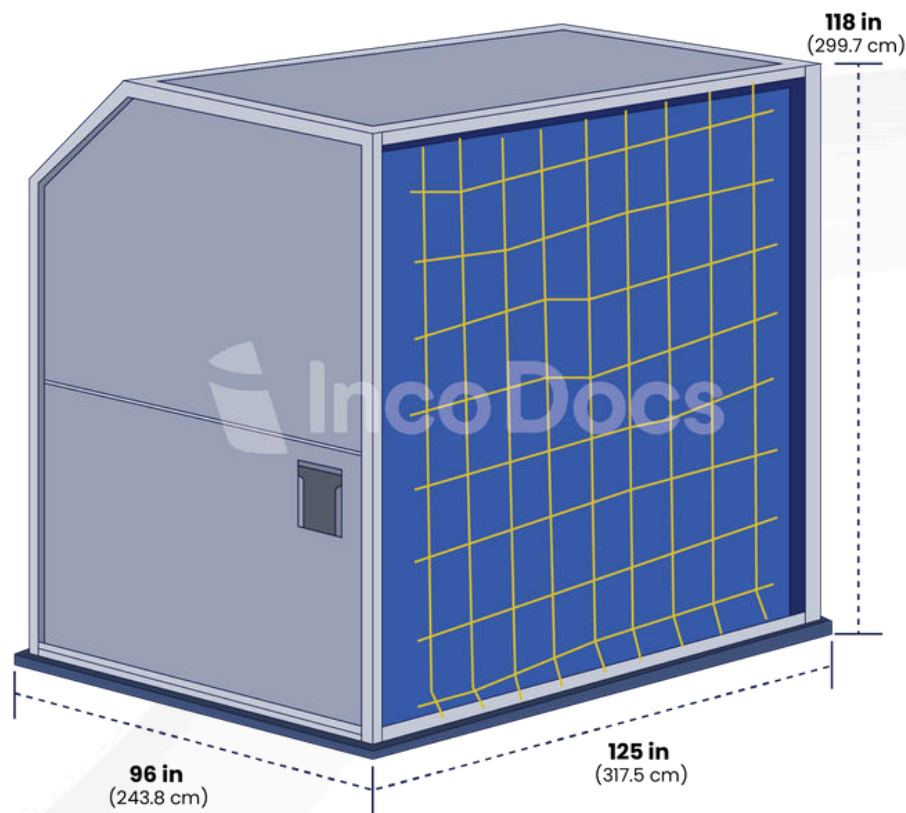
Suitable for: 747F, 747 Combi, 777F center loading only

Maximum gross weight: 6,804 kg (15,000 lb)

Tare weight: 350 kg (772 lb),

AS1825 volume: 17.6 m³ (623 ft³)

M-1H



IATA ULD code: AMD contoured

Rate class: Type 2H

Description: Main-deck upper contoured container. Door is canvas with built-in net door straps.

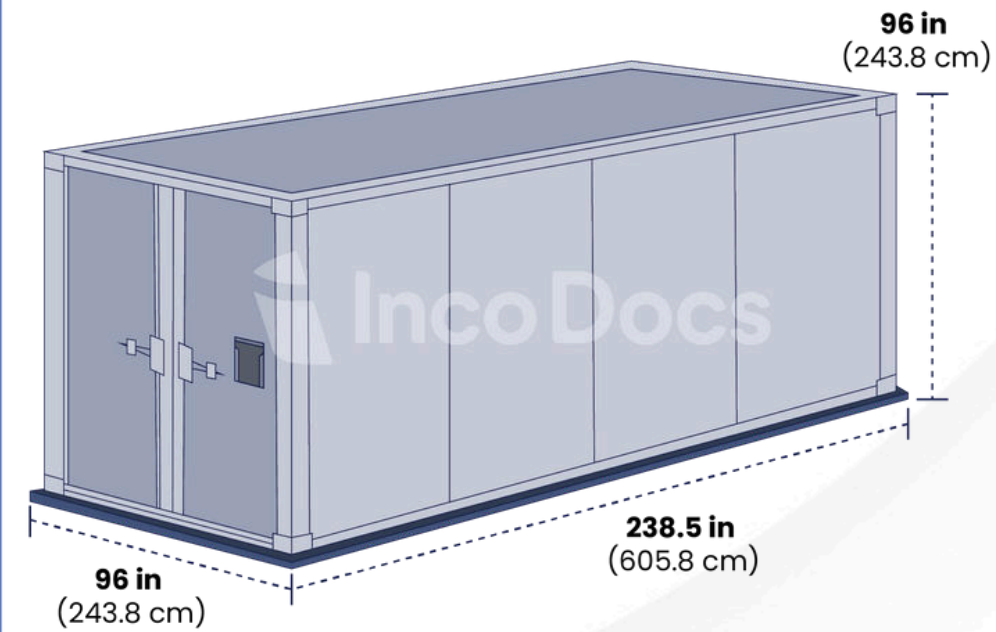
Suitable for: 747F, 747 Combi, 777F center loading only

Maximum gross weight: 6,800 kg (14,491 lb)

Tare weight: 370 kg (816 lb)

AS1825 volume: 21.2 m³ (750 ft³)

M-2



IATA ULD code: AGA 20-ft box container

Prefixes: ASE

Rate class: Type 1

Description: Main-deck container. Door is solid.

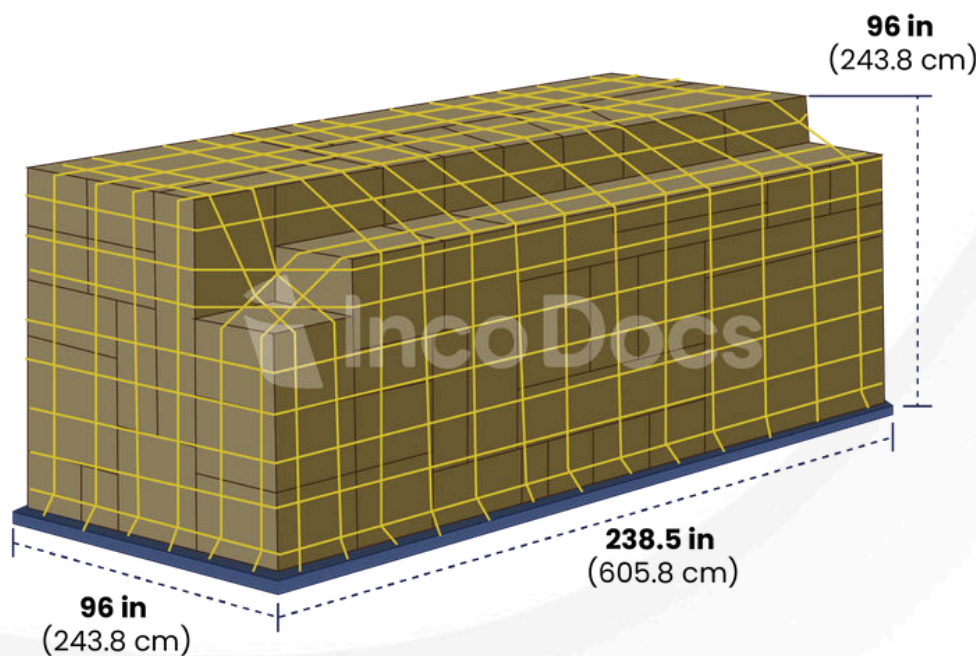
Suitable for: 747F, 747 Combi (243.8 cm) 777F center loading only 238.5 in

Maximum gross weight: 11,340 kg (25,000 lb)

Tare weight: 1,000 kg (2,204 lb)

AS1825 volume: 21.2 m³ (750 ft³)

M-6



IATA ULD code: PGA 20-ft flat pallet with net

Prefixes: PGA, PGE, PGF, PSA, PSG, P7E, P7F, and P7G

Rate class: Type 1

Description: Main-deck pallet squared off to 244 cm (96 in) high.

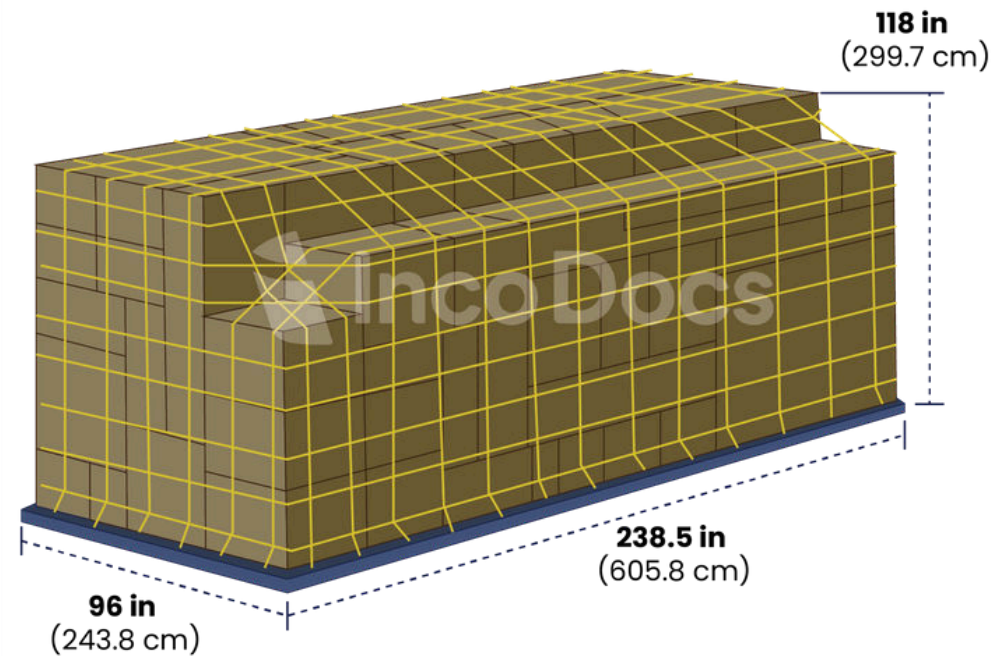
Suitable for: 747F, 747 Combi, 777F

Maximum gross weight: 11,340 kg (25,000 lb) (605.8 cm)

Tare weight: 500 kg (1,102 lb)

AS1825 volume: 33.7 m³ (1,190 ft³)

M-6 (118"H)



IATA ULD code: PGA 10-ft high, 20-ft flat pallet with net

Prefixes: PGA, PGE, PGF, PSA, PSG, P7A, P7E, P7F, and P7G

Rate class: Type 1

Description: Main-deck pallet squared off to 299.7 cm (118 in) high.

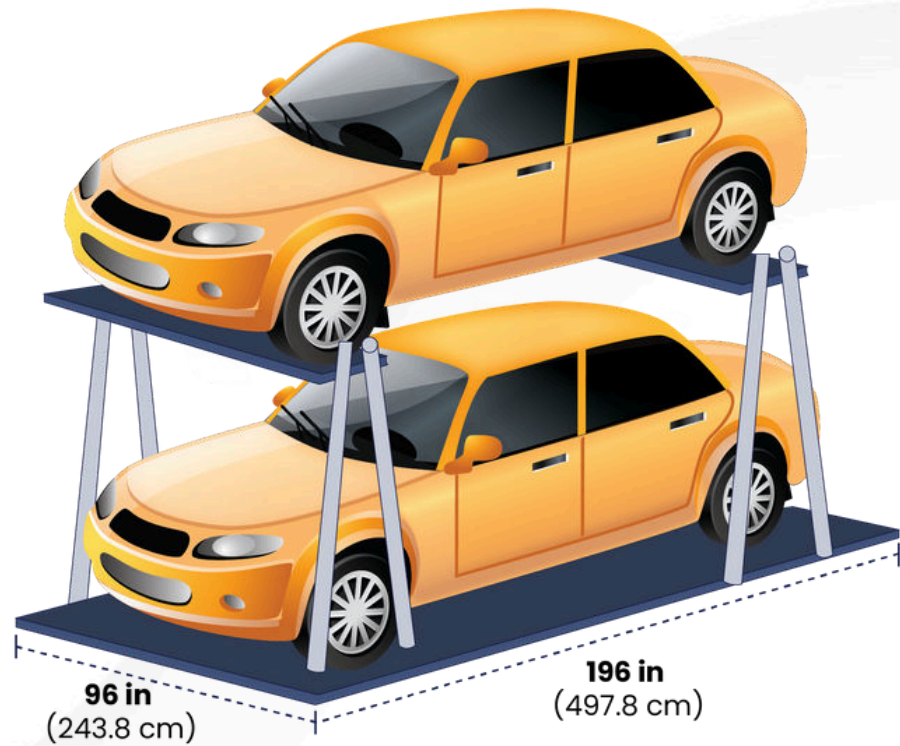
Suitable for: 747 Combi, 777F 238.5 in 747F through side cargo door only

Maximum gross weight: 11,340 kg (25,000 lb)

Tare weight: 500 kg (1,102 lb)

AS1825 volume: 39.6 m³ (1,400 ft³)

M-6 Twin Car Rack



IATA ULD code: PRA 16-ft flat pallet with twin car racks as VRA

Prefixes: PMA, P4A, P4M, and PZA

Rate class: Type 1P

Description: Main-deck pallet with special moulding for car rack attachments. The support racks are available in pairs as IATA ULD code VRA.

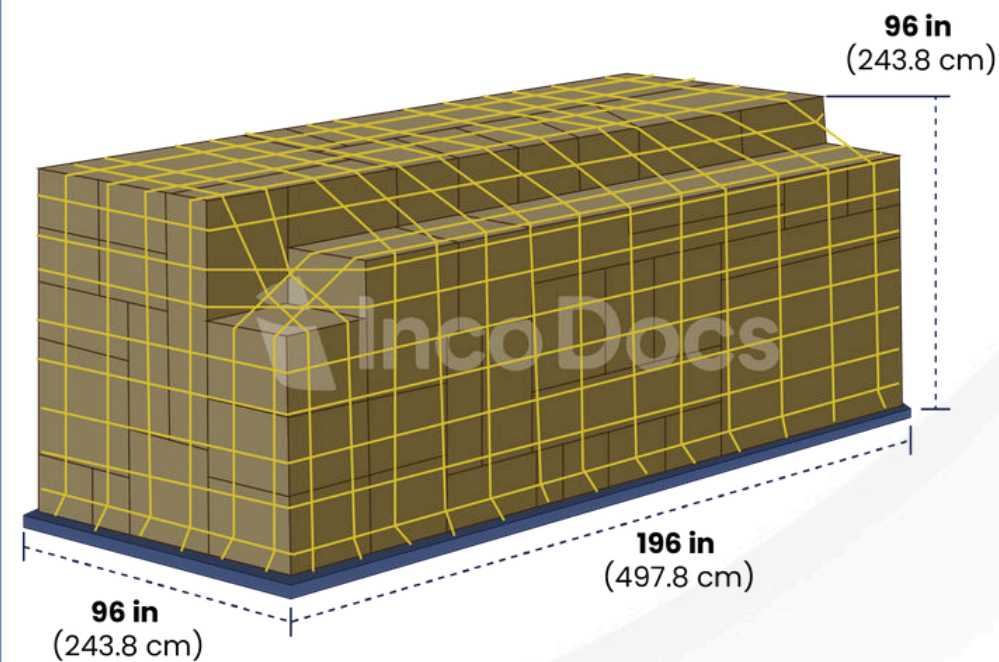
Suitable for: 747F, 747 Combi, 777F (center loading only) Maximum gross weight: 8,900 kg (19,621 lb), vehicle for upper rack must not exceed 1,800 kg (3,968 lb)

Tare weight: 400 kg (882 lb)

Car supports weight: 130 kg (286 lb) per pair

Note: The same system is available for longer vehicles on 20-ft pallet. The only increase in weight is the pallet tare weight: 500 kg (1,102 lb).

MDP



IATA ULD code: PRA 16-ft pallet with net

Prefixes: PMA, P4A, P4M, and PZA

Rate class: Type 1P

Description: Main-deck pallet with net

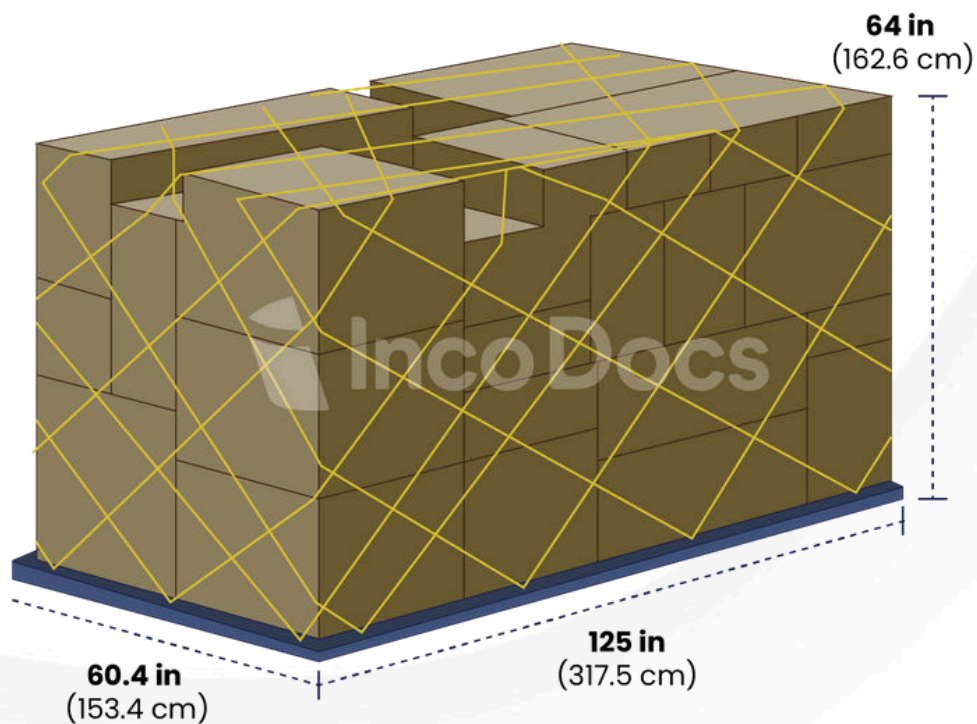
Suitable for: 747F, 747 Combi, 777F

Maximum gross weight: 11,300 kg (24,911 lb)

Tare weight: 410 kg (904 lb)

AS1825 volume: 27.6 m3 (974 ft3)

PLA Half Pallet



IATA ULD code: PLA half pallet with net

Prefixes: PLB, FLA, P9A, P9B, P9P, P9R, and P9S

Rate class: Type 6

Description: Half pallet is contoured for lower hold and main deck.

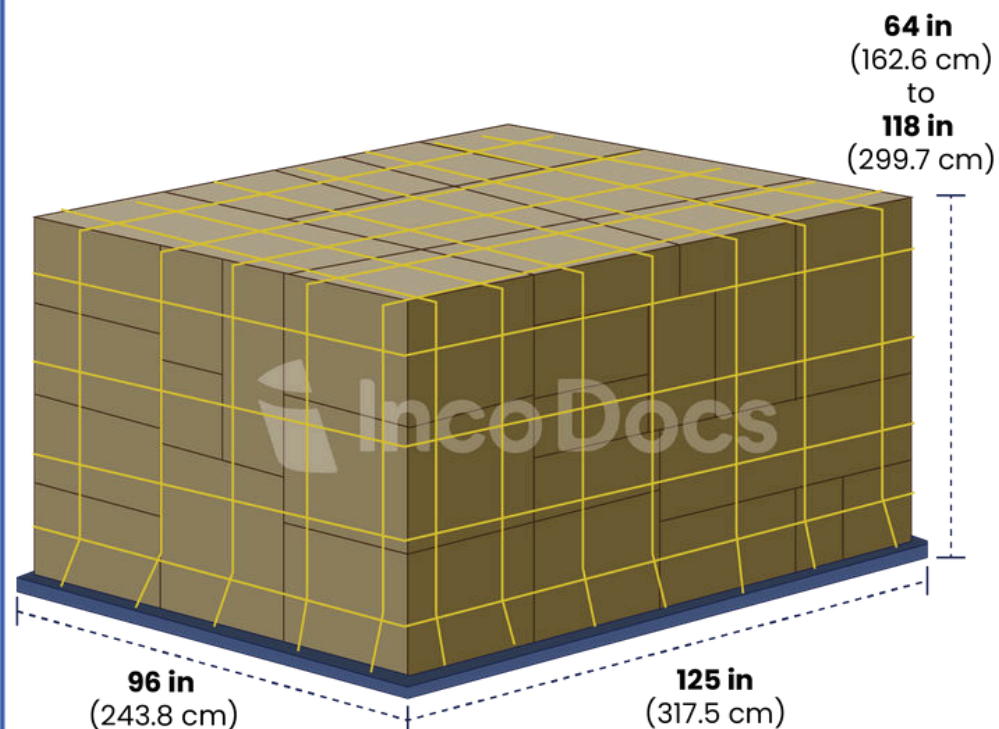
Suitable for: 747, 777, 787 lower hold; 707F, 727F, 737F main deck with contoured load

Maximum gross weight: 3,175 kg (6,999 lb)

Tare weight: 91 kg (200 lb)

AS1825 volume: 7.1 m3 (250 ft3)

PMC/P6P Pallet



IATA ULD code: P6P 10-ft flat pallet with net

Rate class: Type 2BG

Description: Universal general-purpose flat pallet for lower holds and main decks.

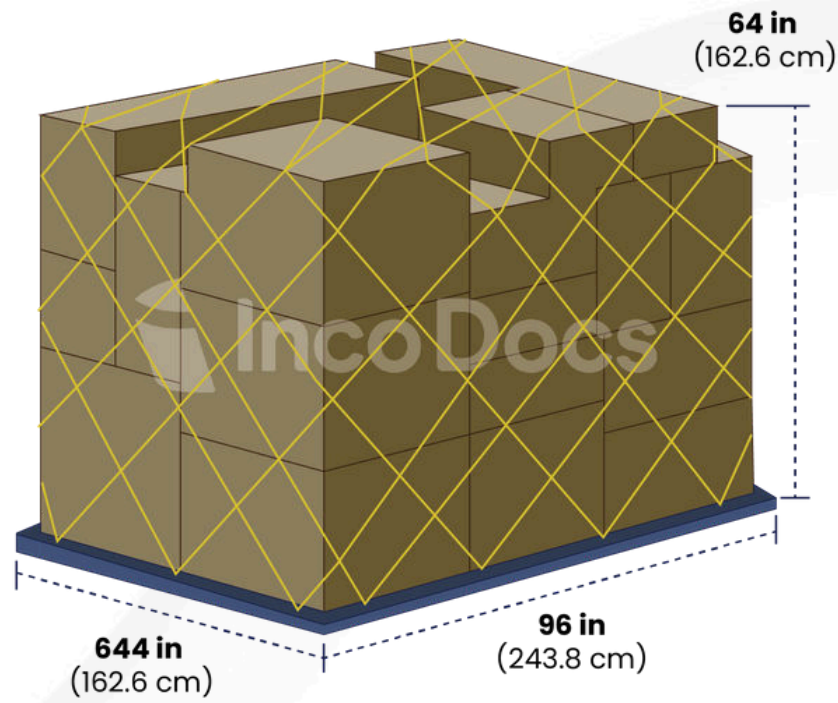
Suitable for: 747, 767, 777, 787, DC-10, MD-11

Tare weight: 120 kg (265 lb)

AS1825 volume: H 162.6 cm H 243.8 cm H 299.7 cm
H 162.2 cm H 243.8 cm H 299.7 cm

Boeing volume: (64 in), 11.5 m3 (407 ft3) (96 in), 17.0 m3 (600 ft3) (118 in), 21.2 m3 (750 ft3) (64 in), 11.7 m3 (415 ft3) (96 in), 17.0 m3 (600 ft3) (118 in), 21.2 m3 (750 ft3)

PNA Half Pallet



IATA ULD code: PNA 767 half pallet with net

Prefixes: PQP, FQF, and PPC

Rate class: Type 8

Description: Half pallet squared off for 767 lower hold

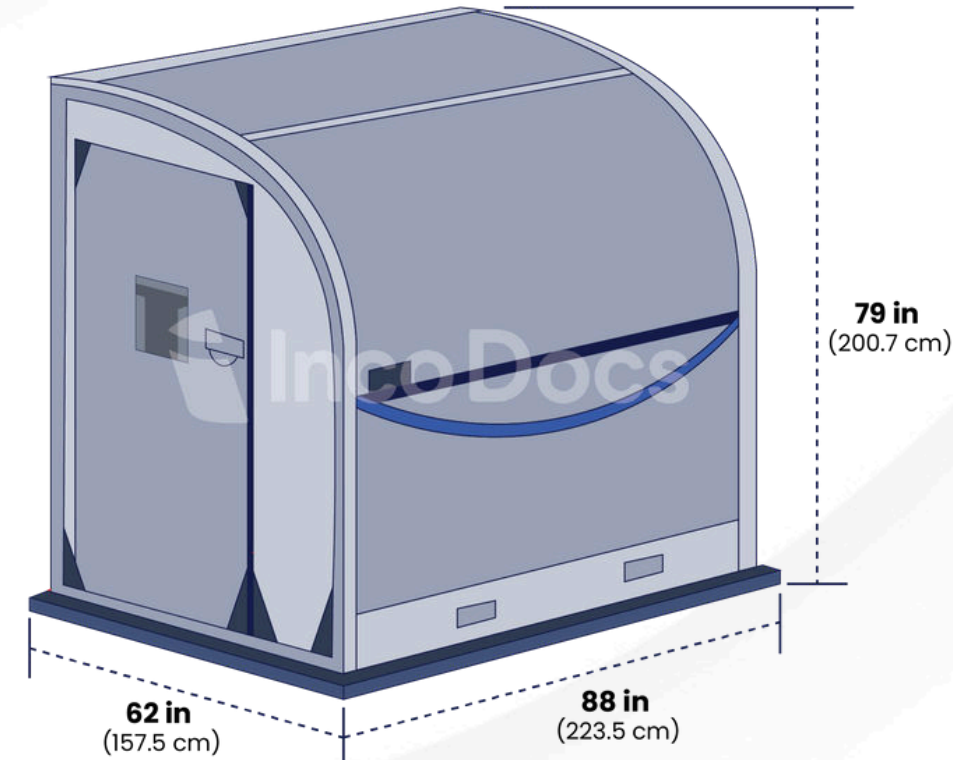
Suitable for: 767, 787 lower hold

Maximum gross weight: 2,449 kg (5,399 lb)

Tare weight: 83 kg (183 lb)

AS1825 volume: 5.5 m3 (194 ft3)

Demi



IATA ULD code: AYY contoured container on half pallet base.

Rate class: Type 7

Suitable for: 727F, 737F, 757F main deck, 747F, 767F, 777F, DC-10F, MD-11F main deck

Maximum gross weight: 3,016 kg (6,649 lb)

Description: Half-width main deck container with top contour

Tare weight: 80 kg (176 lb)

AS1825 volume: 5.8 m3 (206 ft3)

Faster, Smarter Global Trade Documentation

IncoDocs is secure export documentation software, built for modern small and medium business.

